

IDENTIFICATION HAZARDS IN ERECTION OF TOWER CRANE

Hakan Erdogan

Esenyurt University, Turkey

Introduction

Tower cranes are extensively used for lifting materials in construction sites. Most construction sites are very confined and close to public. Although tower crane is vital for the construction industry, tower crane accidents are still too frequent [1]. Tower crane accidents not only hazard workers in construction sites, but also pedestrians [2]. 872 tower crane accidents causing over 668 deaths along with countless injuries have occurred since 2000 year . Also since 2009 there have been over then 116 accidents and causing 44 deaths. Erection , dismantle and climbing is %42 of all accidents[3].

Tower cranes are positioned inside or outside of a building. Tower cranes can carry loads between 0,5 tons and 22 tons. However, they have heights ranging from 15 meter to 75 meter [4]. Tower cranes are in H1 lifting category according to Federation of Material Handling (FEM) [5] and in B3 loading category according to International Organization for Standardization (ISO) [6].

Static and mobile tower cranes are available in a wide variety of types and configurations according to the particular combination of tower, jib and type of base which they employ. Tower cranes are available with either fixed or slewing towers. On the fixed tower type the slewing ring is situated at or near the top of the

tower and the jib slews about the vertical axle of the stationary tower. The slewing ring on the slewing tower type is situated at the bottom of the tower and the whole of the tower and jib assembly slew relative to the base of the crane. The towers can be further classified as being mono towers, inner and outer towers and telescopic towers.

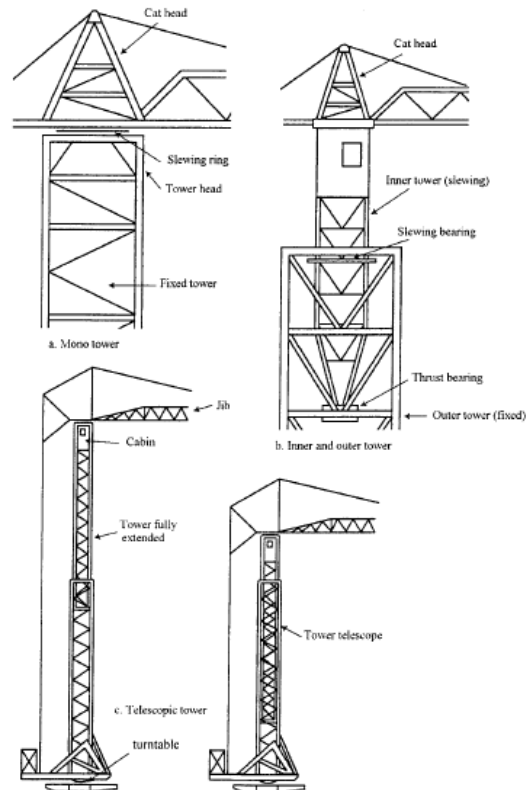


Figure 1 : Kinds of tower on tower cranes

Mono Towers : The jib is carried by a single tower structure which may be either fixed or slewing. Provision may be made in the design to permit the tower to be extended (Figure 1a).

Inner and Outer Towers - They are characterized by the jib being carried by a fixed or slewing inner tower which is supported at the top of the fixed outer tower. Provision may be made in the design to permit the outer tower to be extended (Figure 1b).

Telescopic Towers - The tower structure consists of two or more main sections which nest into each other to enable the height of the crane to be altered without the need for partial dismantling and re-erection. Telescopic towers are usually of

slewing type and more common on rail-mounted and mobile tower cranes (Figure 1c).

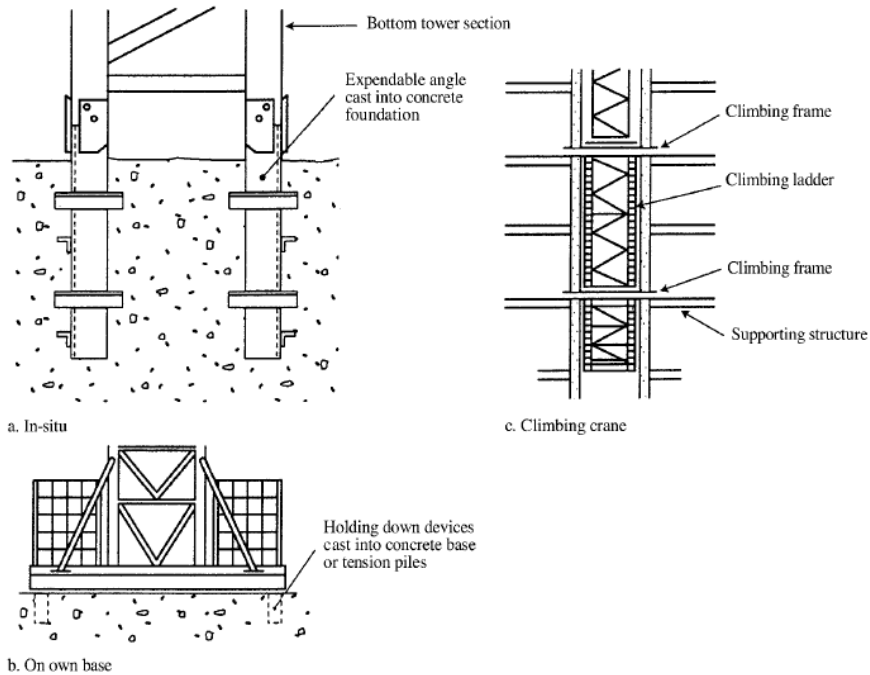


Figure 2 : Kinds of static base for tower cranes

Tower cranes are also characterized according to their mounting configuration.

a) Static bases : There are three main types of static bases

a1) In-situ base - The crane is mounted on special corner angles, frames or an expendable tower section, cast into the concrete foundation block (Figure 2a).

a2)On own base - The crane is mounted on its own base section or chassis which, without wheels and travelling gear, but with ballast, stands on a concrete base (Figure 2b).

a3) Climbing base - The crane is supported by the structure which it is being used to construct, and to which it is attached by climbing frames and wedges. The height of the cranes can be extended as the height of the structure increases by means of climbing supports attached to the frames. Climbing support can be metal ladders, rods or tubes. A climbing crane may be mounted initially on a fixed base and its support be later transferred to climbing frames and supports (Figure 2c).

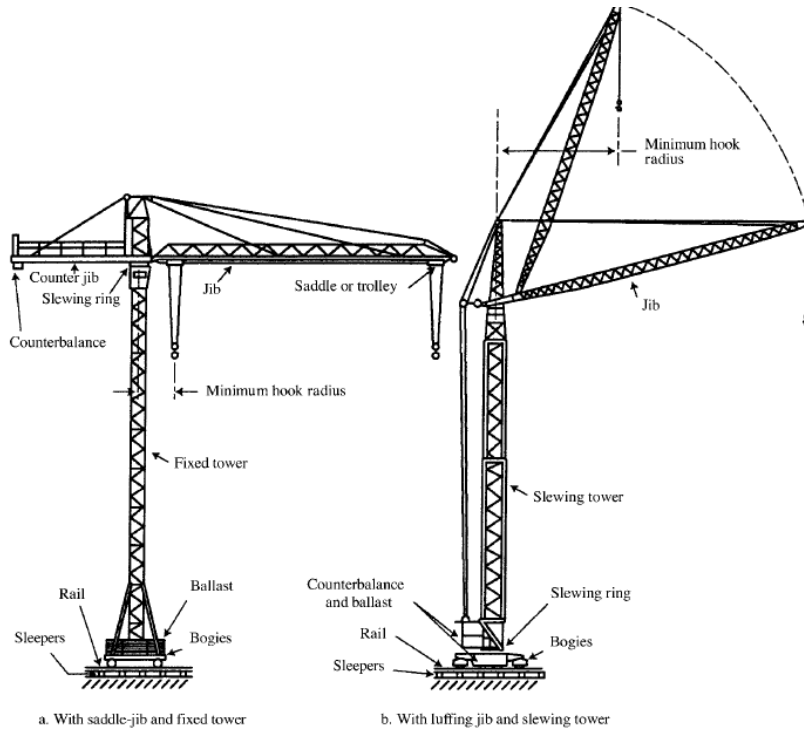
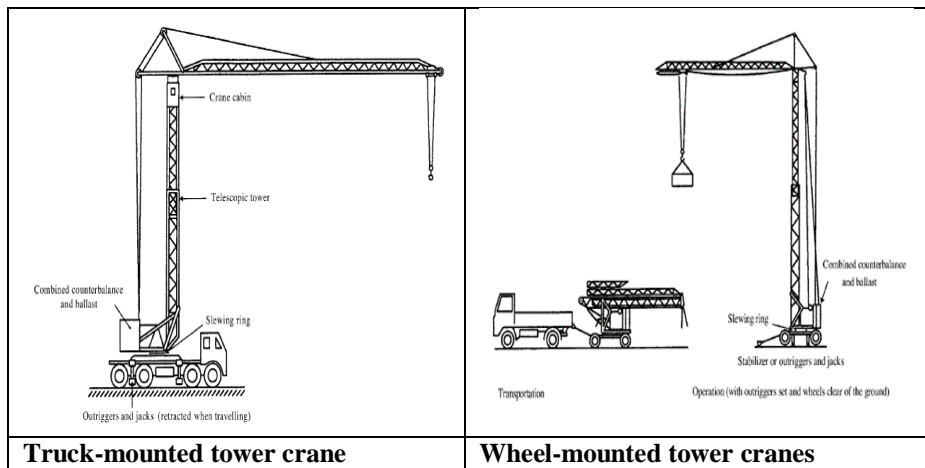


Figure 3 : Rail-mounted tower cranes

b) Rail-mounted units - The cranes are mounted on a chassis frame which is supported on rail wheels. The wheels are usually double flanged. When all wheels are removed, some tower cranes can be used as static-based cranes (Figure 3).



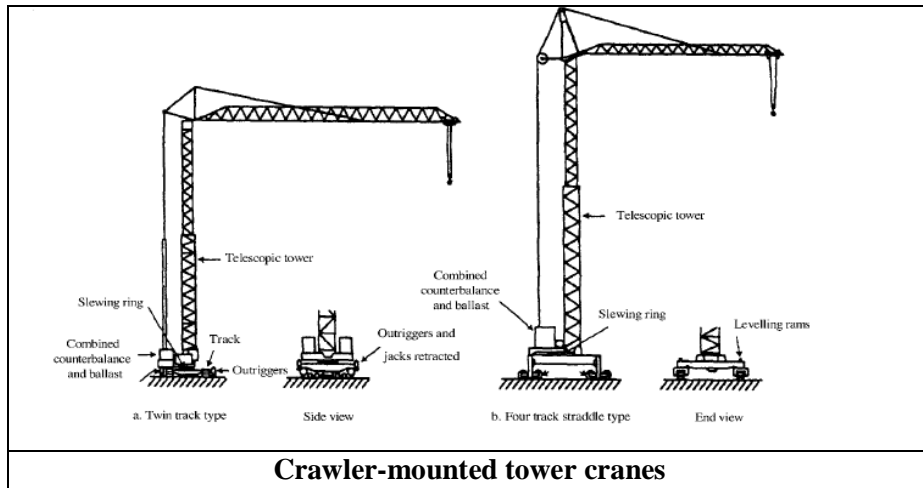


Figure 4 : Mobile units of tower cranes

c) Mobile units - The mobile mounting configuration consists of truck mounted, wheel-mounted or crawler-mounted units (Figure 4) [7].

Material and method

This study carried out with static two tower cranes in Volgograd Deep Conversion Project (Refinery construction project that is built by Tecnicas Reunidas S.A.). Complex MHC Vertical Package has contained earthworks infrastructure, construction, steel structures, mechanical and commissioning works (Figure 5)[8].



Figure 5 : Volgograd Deep Conversion Project in Russia

Checklist method is using commonly in several process. Application of checklist is also simple and useful. Despite the significant progress in tower crane safety research, checklist method approaches are lacking.

In this study, below checklist is used to identification of hazards on installation tower crane [9].

ASSEMBLY OF TOWER CRANE	
Proximity to plant, structures and public areas	<p>Is the crane positioned so that the risk of injury from collision with other plant or structures is minimised? Consider:</p> <ul style="list-style-type: none"> •overhead electrical lines and other services •nearby structures • other cranes or high obstructions (e.g. concrete placement booms), including those in adjacent workplaces •the vicinity of aerodromes and aircraft flight paths. • calibration of water balance equipment.
	<p>If the crane shares the same air space with another crane from an adjacent workplace, has the principal contractor from each workplace negotiated and implemented documented systems of work to minimise the risk of collision?</p>
	<p>Is the crane positioned so that lifting loads over public areas (e.g. footpaths, roads, railways, waterways, buildings) is avoided where possible?</p>
Exclusion zones	<p>Have appropriate exclusion zones been established around the crane? They should:</p> <ul style="list-style-type: none"> • prevent cranes nearing the vicinity of overhead electrical lines • prevent people working around the area of the crane that don't need to be there • prevent other plant and vehicle traffic from entering the area of the crane • avoid lifting loads over areas where people are present • keep workers and others a safe distance away from the crane when maintenance or climbing of the crane is being carried out.
	<p>Have all relevant workers been informed and understand where exclusion zones are established?</p>

Erecting and dismantling tower crane	<p>Is there a system in place to ensure that during erecting, climbing and dismantling the crane, the risk of the crane collapsing is minimised? This includes:</p> <ul style="list-style-type: none"> • instructions for erecting and dismantling activities • activities supervised by a competent person • components are assembled in the correct sequence • tower sections are the correct model and identified with their type and serial number • the correct type and grade of bolts are used when connecting tower sections • all bolts are correctly torqued • work is scheduled to take place outside of normal work hours as far as practicable • appropriate exclusion zones are maintained.
	<p>Have crane ties been secured to the supporting structure at set intervals in accordance with the crane manufacturer's and designer's instructions?</p>
	<p>Are control measures in place to minimise the risk of workers falling from height during the erecting, climbing and dismantling of the crane? Control measures include:</p> <ul style="list-style-type: none"> • edge protection systems • travel restraint systems • fall-arrest harness systems.
	<p>Are control measures in place to minimise the risk of workers or other people being hit by falling objects during the erecting, climbing and dismantling of the crane?</p> <p>These control measures include:</p> <ul style="list-style-type: none"> • exclusion zones • tool lanyards • mesh screens • scheduling of work • restraining systems for crane components.
Commissioning	<p>Is a commissioning report available that confirms that a competent person has tested, inspected and ensured the crane is in full working order prior to it being put in to active service?</p>

Wind conditions	<p>Have wind conditions been considered as to how they may affect the crane's stability?</p> <p>Consider:</p> <ul style="list-style-type: none"> • wind speed as measured at the top of the tower • maximum wind speed rating of tower crane installation (e.g. crane, crane base, crane ties) specified by the manufacturer or designer • effect of wind gusts • types of loads (e.g. surface area) and lifts to be performed • experience and judgement of the operator.
-----------------	---

Discussion and results

Identification of hazards in the erection of tower crane is provided to eliminate possible accidents during operations. Using control checklist minimizes unsafe conditions and unsafe acts.

During controls some improper situations are defined.

- *lack of education*
- *find out not calibrated water balance equipment*
- *seen not inspected tool lanyards*
- *inadequate supervision*
- *using defect hand tools*
- *Not used proper anchorage members fixed the crane foot-rings.*

After defined hazards, temporary and permanent precautions were taken. Inadequate training and fatigue of practitioners are one of the main reasons causing unsafe practices of tower crane operations. Therefore, all employee was trained. Number of audits were increased and fixed all unsafe conditions. Measuring instruments were calibrated and changed all damaged equipment.

References and notes:

- Wei Zhou, Tingsheng Zhao, Wen Liu, Jingjing Tang, “Tower crane safety on construction sites: A complex sociotechnical system perspective”
- Vivian W.Y.Tam, Ivan W.H.Fung “Tower crane safety in the construction industry: A Hong Kong study” <https://doi.org/10.1016/j.ssci.2010.08.001>-<http://towercranesupport.com/09article.php>, accessed December 18, 2018.
- Neitzel, Richard L., Noah S. Seixas, ve Kyle K. Ren. A Review of Crane Safety in the Construction Industry. *Applied Occupational and Environmental Hygiene* 2010;16:1106-1117.
<https://www.fem-eur.com/product-groups/cranes-lifting/> , accessed December 18, 2018.
<https://www.iso.org/technical-committees.html> , accessed December 18, 2018.
- 7Occupational Safe and Health Branch Labour Department, Code of Practice For Safe Use of Tower Cranes, 2011;p.15-19
<https://www.yamata.com.tr/en/projects/volgograd-deep-conversion-project/> , accessed December 18, 2018.
- <https://www.worksafe.qld.gov.au> , accessed December 18, 2018.

XÜLASƏ

Qüllə kranının qurulmasında yaranan təhlükələrin qarşısının alınması

Hakan Ərdoğan
Əsənyurd Universiteti, Türkiyə

Qüllə kranları tikinti sahələrində materialların qaldırılmasında istifadə olunur. Ən çox inşaat layihələrində getdikcə əsas komponentlərdən birinə çevrilməyə başlayır. Qüllə vinçləri daşınma baxımından çox böyükdür. Buna görə də, quraşdırılarkən hissə -hissə yığılır . Kranın hər hissəsinin yığılma metodikası fərqlidir, bun görə də yığılma prosesində xüsusi təhlükəsizlik tədbirləri də görülür. İlk öncə qüllə vinçləri möhkəm yerə yerləşdirilir. Baş verən qəzaların çoxu bundan asılıdır.

Səhv montaj əməliyyatları bir sıra təhlükəyə gətirib çıxarır və qəzaların əksəriyyəti ölümcül olur. Mümkün qəzalar ətrafda yerləşən binalara, materiallara, avadanlıqlara və digər nəqliyyat vasitələrinə və s. ziyan verə bilər. Bu mövzunu araşdırmada məqsəd qüllə kranının quraşdırılmasında nəzarət siyahısından istifadə etmənin əhəmiyyətini sübut etməkdir.

Açar sözlər: qüllə kranı, tikinti, ziyan, inşaat layihələr, montaj əməliyyatları

РЕЗЮМЕ

Предотвращение опасностей, возникающих при сооружении башенного крана

Хакан Эрдоган
Университет Эсеньюрт, Турция

Башенные краны используются для поднятия материалов на строительных площадках. Они становятся все более важными компонентами в большинстве строительных проектов. Башенные краны имеют очень большие объемы с точки зрения транспортировки. Поэтому при сооружении собирается по частям. Во-первых, башенные краны прочно размещаются на земле. От этого зависит большинство происходящих аварий. Неправильные монтажные операции приводят к ряду опасностей и большинству несчастных случаев со смертельным исходом. Возможные аварии могут привести к повреждению зданий, материалов, оборудования и других транспортных средств, расположенных в окрестностях. Цель этого исследования этой темы - доказать важность использования контрольного списка для построения башенного крана.

Ключевые слова: башенный кран, строительство, повреждение, строительные проекты, монтажные работы.